

oakheart

£180,000

Guide Price

Steed Crescent, Colchester



Guide Price: £180,000 - £190,000.

A spacious and well-presented two bedroom, two bathroom top floor apartment, ideally situated in the highly regarded New Town area of Colchester, offering excellent access to local amenities, Colchester City Centre and Colchester Town Station with direct rail links into London Liverpool Street.

The accommodation is thoughtfully laid out and begins with a welcoming

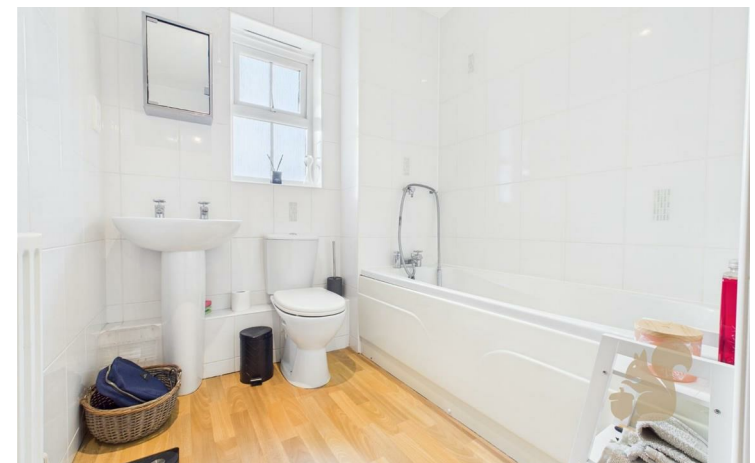
entrance hall, complete with a useful storage cupboard. There is a well-proportioned double bedroom, alongside a modern family bathroom comprising a bath with shower over, WC and wash basin. The principal bedroom benefits from built-in storage and a private en-suite shower room, creating an ideal main bedroom retreat.

To the rear of the property is a bright and airy open plan kitchen, dining and living area, enhanced by an attractive bay window which floods the space with natural light. The kitchen is well equipped, offering ample

worktop and cupboard space, making it both practical and sociable for everyday living and entertaining.

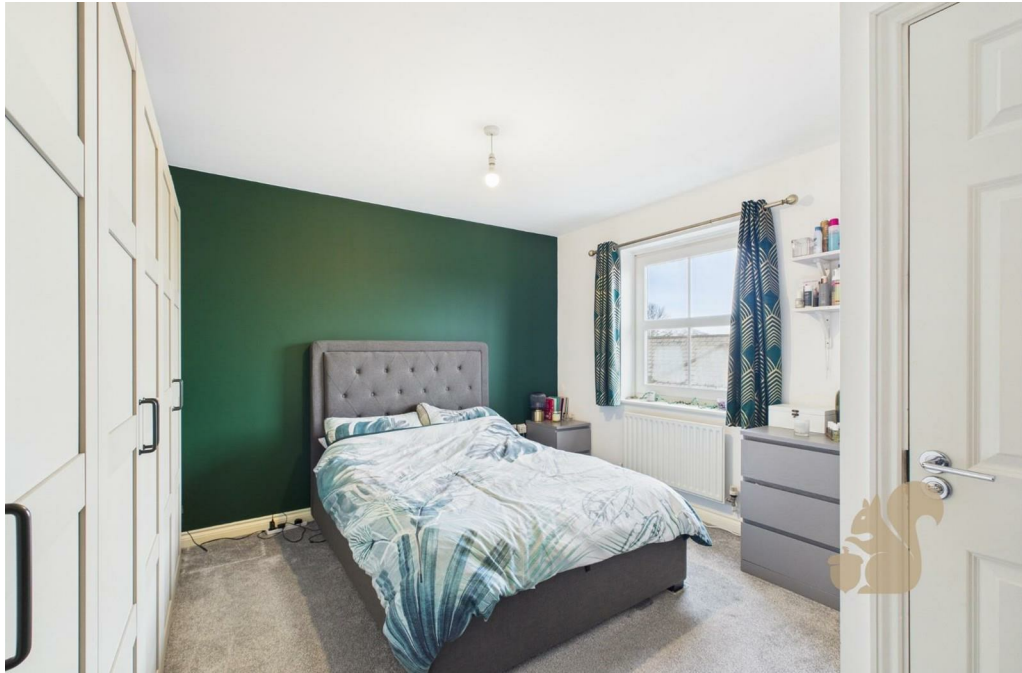
Externally, the property further benefits from an allocated parking space.

This impressive apartment would make an ideal first-time purchase, investment opportunity or low-maintenance home, conveniently located close to transport links and the city centre.



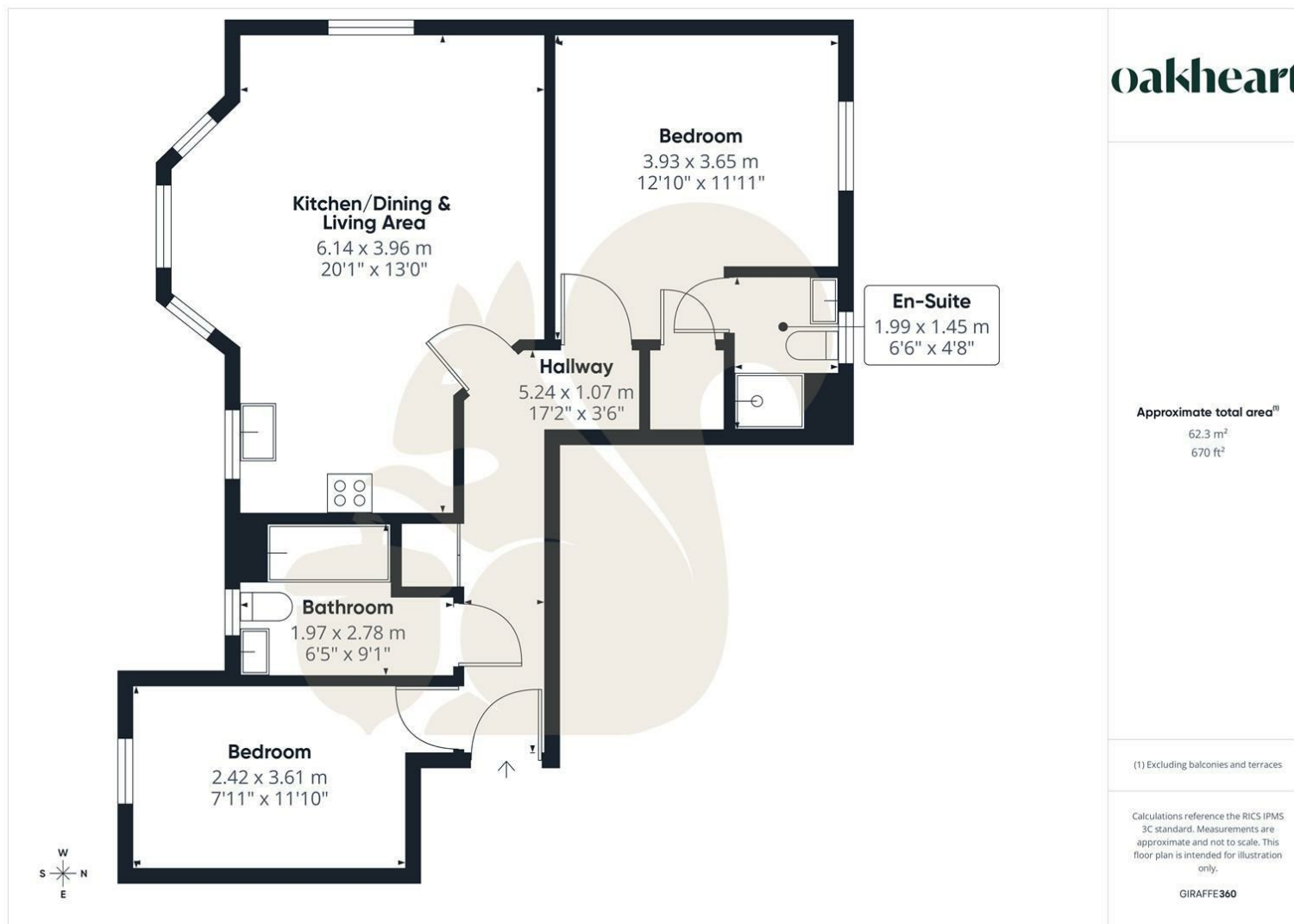












Local Authority:  
Colchester

Tenure:  
Leasehold

Council Tax Band:  
B

### Energy Efficiency Rating

	Current	Potential
Very energy efficient - lower running costs		
(92 plus) <b>A</b>		
(81-91) <b>B</b>		
(69-80) <b>C</b>	78	80
(55-68) <b>D</b>		
(39-54) <b>E</b>		
(21-38) <b>F</b>		
(1-20) <b>G</b>		
Not energy efficient - higher running costs		
<b>England &amp; Wales</b>	EU Directive 2002/91/EC	

Agents Note: Whilst every care has been taken to prepare these particulars, they are for guidance purposes only. All measurements are approximate and are for general guidance purposes only and whilst every care has been taken to ensure their accuracy, they should not be relied upon.

Oakheart Colchester  
01206 803 308  
colchester@oakheart.co.uk  
2b Cotman Road, Colchester, Essex, CO3 4QJ

**oakheart**